

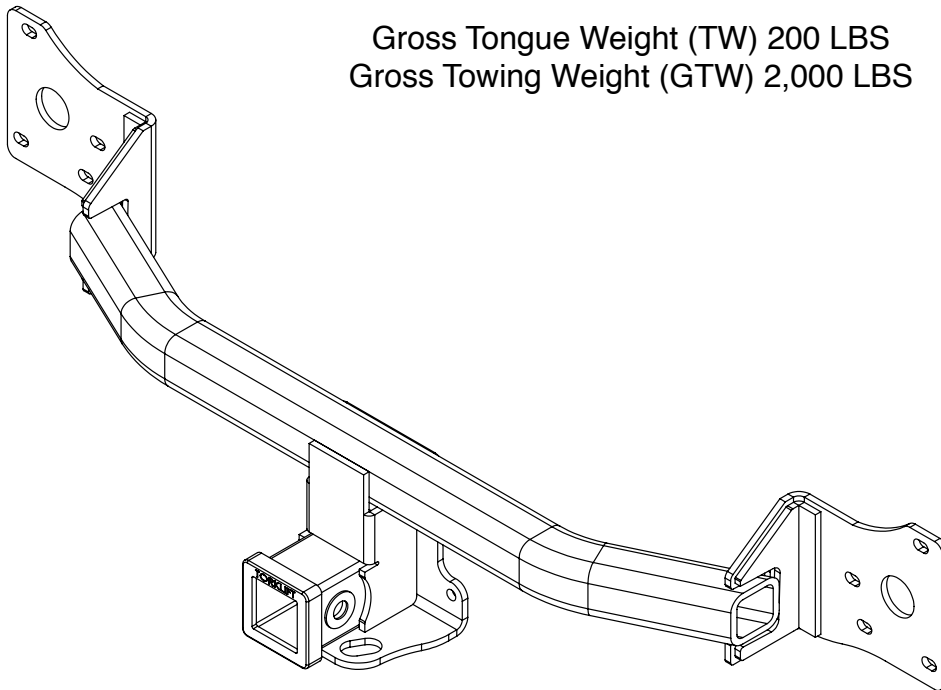
**ecoHITCH** -Designed Specifically For Your **Green Vehicle**

# Installation Instructions

Application Fits  
2009-2014 Honda Fit  
X7286 & X7287

2" & 1.25" EcoHitch Stealth

Gross Tongue Weight (TW) 200 LBS  
Gross Towing Weight (GTW) 2,000 LBS



Torklift Central  
315 Central Ave N  
Kent, WA 98032  
253-854-1832  
[www.torkliftcentral.com](http://www.torkliftcentral.com)  
[support@tlcentral.com](mailto:support@tlcentral.com)

## Stay Connected



torkliftcentral



torkliftcentral



tlcentral



torklift central



torklift central



Bolt Kit Weight: 336g +/-

Hardware Included

QTY	Fastener
6	5/16" Flat Washer
9	5/16" Lock Washer
4	3/8" Flat Washer
4	3/8" Lock Washer
2	3/8"-16 Hex Nut Grade 5
4	3/8"-16 x 1" Hex Cap Bolt

QTY	Fastener
3	M8-1.25 Hex Nut
6	M8-1.25 x 40mm Hex Cap Bolt
1	Nut Plate
1	Stiffener Bracket
1	18" Trim Lok Strip

**READ THESE INSTRUCTIONS THOROUGHLY AND ACCOUNT FOR ALL HARDWARE LISTED BEFORE BEGINNING INSTALLATION!**

**Step 1.** Raise rear of vehicle off of ground and place on ramps or suitable jack stands.

**Step 2.** Open the rear hatch and remove the light assembly covers on the driver and passenger sides.

**Step 3.** Disconnect the wiring harness and gently pull the light bulbs out of the light assembly housing. Remove the (3) hex cap nuts and slide the light assembly housing rearward. Repeat on opposite side. See Figure [1].



Fig. 1

**Step 4.** Remove all screws, bolts, and clips shown in Figure [3] to release the bumper fascia. Use Figure [2] for reference.

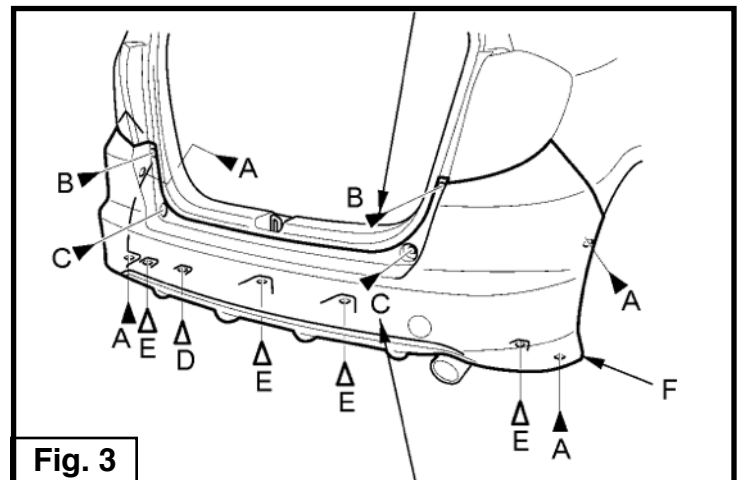
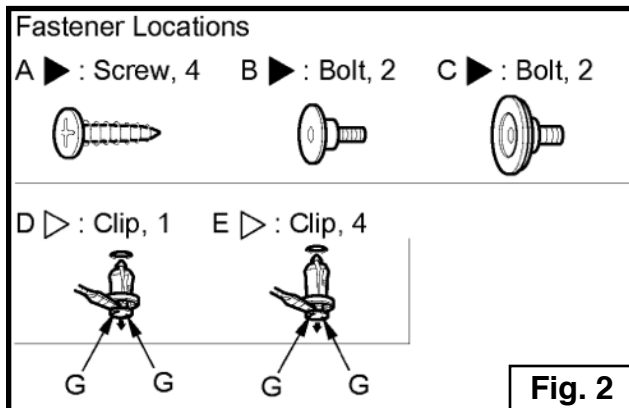
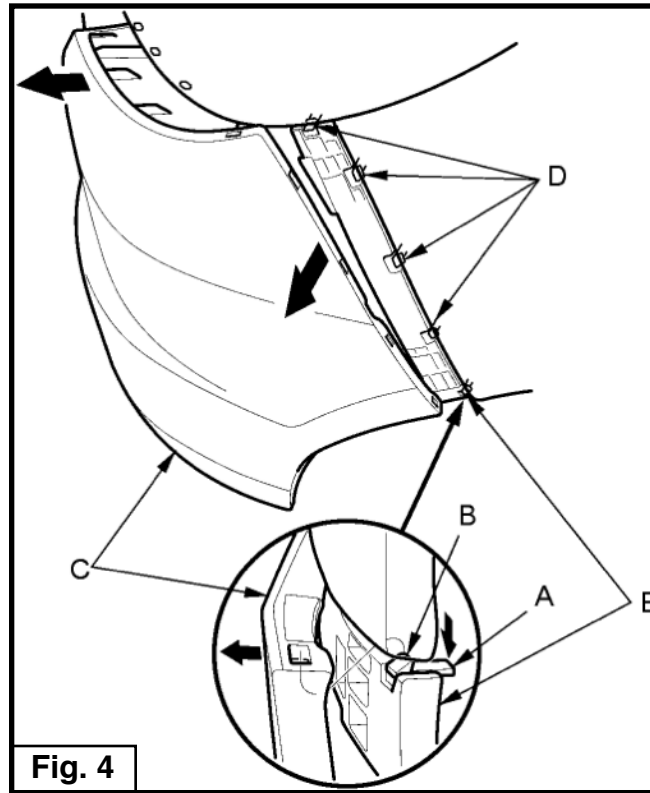
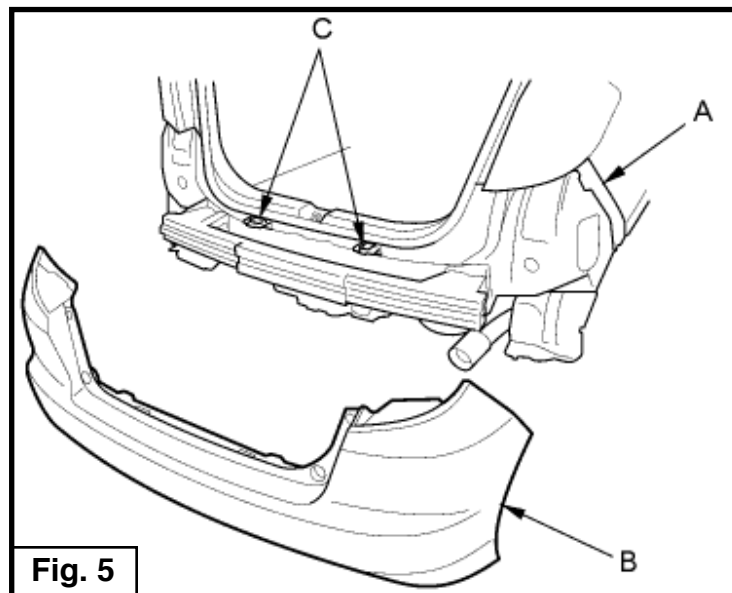


Fig. 3

**Step 5.** Push the tab (A) to release the bottom hook (B), then pull on the rear bumper (C) at the wheel arch areas to release it from the hooks (D) on the side spacers (E). See Figure [4].



**Step 6.** With the help of an assistant, hold the wheel arch portions away from the side spacer (A), and pull the rear bumper (B) to release the bumper from the hooks (C) on the body. See Figure [5].



**Step 7.** Remove the impact bar by removing the (6) hex cap bolts, then lift and remove the impact bar. Discard factory bolts.

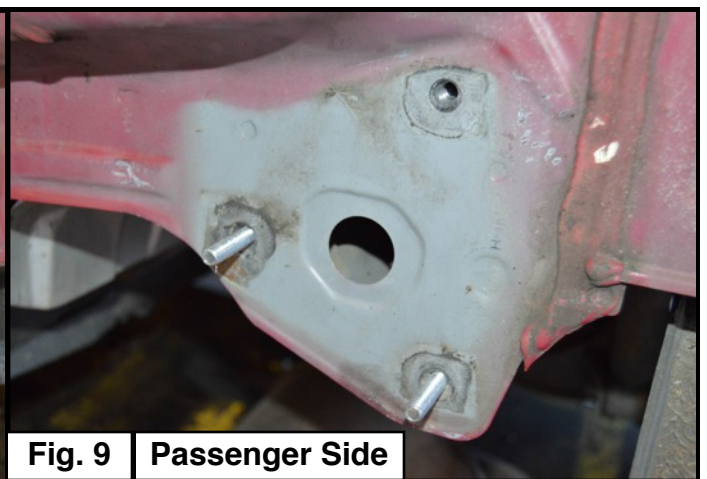
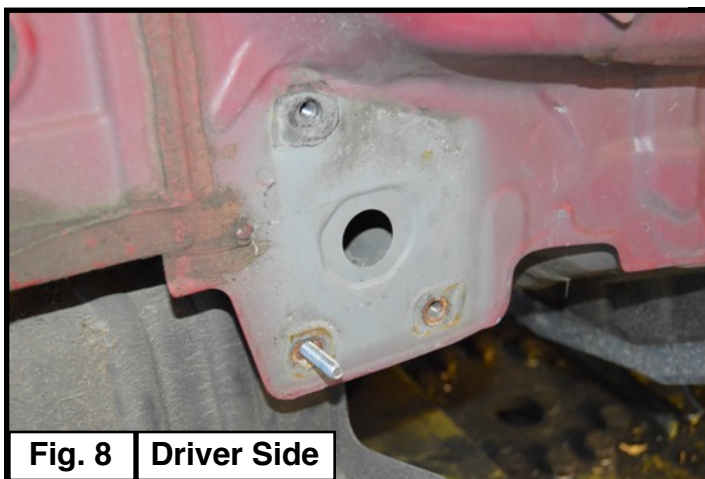
**Step 8.** Bend the small metal tabs of the impact bar upward toward the center of the bar before reinstallation. See Figure [6].



**Step 9.** Lower exhaust by lubricating the rubber exhaust bungs with a lubricant such as WD-40 and slide off. Support the exhaust with a stand or other prop to avoid damage. See Figure [7].



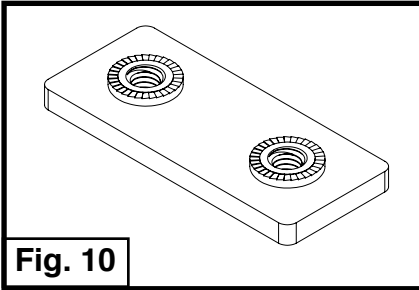
**Step 10.** Thread (1) M8x1.25x40mm bolt and (1) 5/16" lock washer through the weld nuts towards the rear of the vehicle. Repeat on remaining weld nut locations shown in Figure [8] & [9].



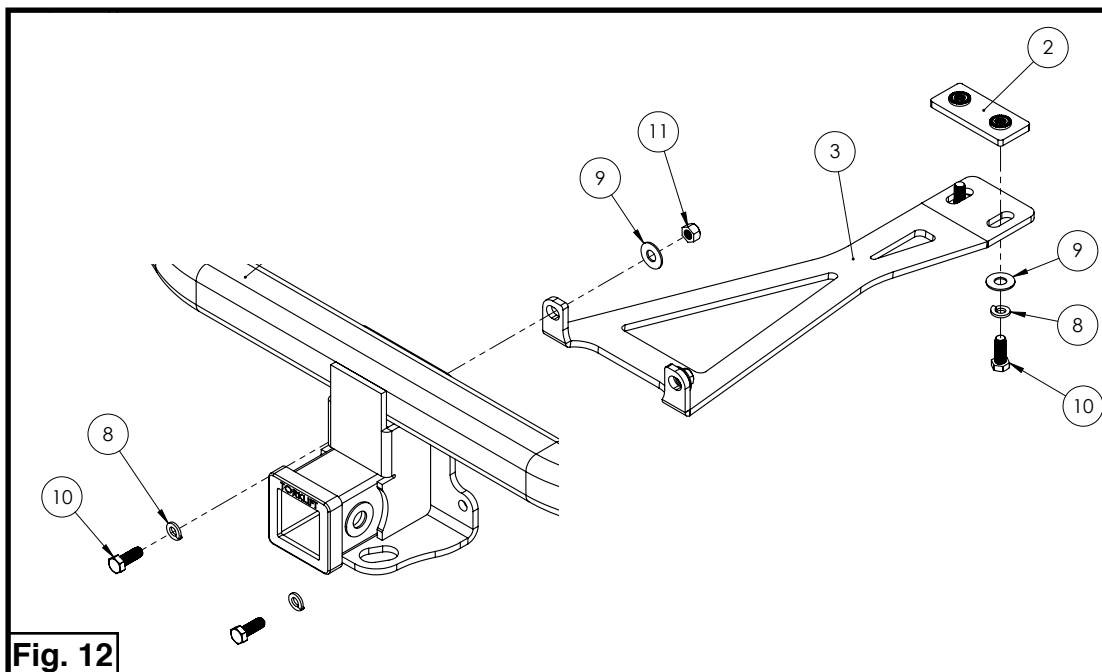
**Step 11.** Place the hitch onto the newly installed stud bolts. Once hitch is in position, place impact bar with the now bent tabs back into position over the hitch and secure stud bolts with (1) 5/16" flat washer, (1) 5/16" lock washer, and (1) M8x1.25 hex nut. **Hand tighten, do not torque at this time!**

**Step 12.** Thread (1) M8x1.25x40mm, (1) 5/16" lock washer, and (1) 5/16" flat washer into the top left and bottom right holes in driver side of the impact bar. Repeat for the top right hole on the passenger side of the impact bar. Figure [8] & [9] shows locations of the holes without the impact bar, use for reference only. Once all hardware is installed and secured, torque hardware to 20 ft-lbs.

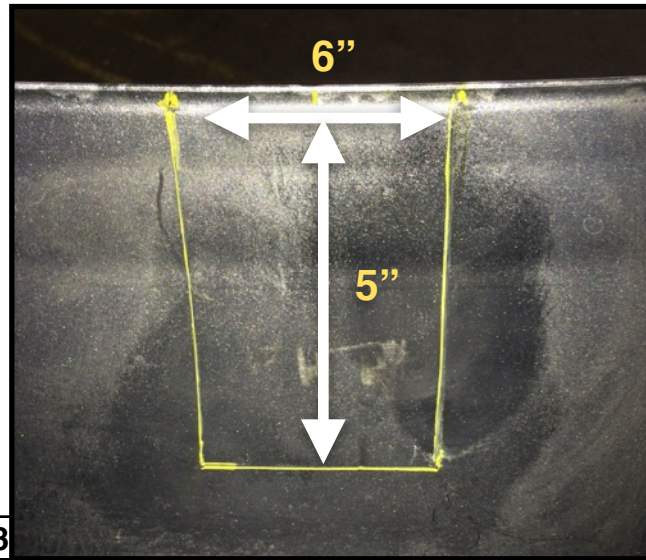
**Step 13.** Install the Nut Plate by sliding it into the opening of the vehicle underbody, located directly forward of the hitch receiver. Once installed, raise the Stiffener Bracket into position as shown in Figure [11] & [12]. Secure the Stiffener Bracket to the Nut Plate using (1) 3/8"x1" bolt, (1) 3/8" lock washer, and (1) 3/8" flat washer on both holes. **Hand tighten only at this time.**



**Step 14.** Secure the Stiffener Bracket to the EcoHitch by placing (1) 3/8"x1" bolt and (1) 3/8" lock washer, through the holes located on the face of the chain plate. On the back side of the Stiffener Bracket, secure the 3/8" bolts with (1) 3/8" flat washer and (1) 3/8" nut. See Figure [13]. Torque all 3/8" hardware to 20 ft-lbs.



**Step 15.** Find the center of the bumper fascia and mark a 6"x5" section for trimming. Using an air saw or utility knife, trim your marked portion of the bumper fascia then apply the provided Trim Lok. Use a pair of wire cutters to trim the excess Trim Lok. See Figure [13] for reference only.



**Fig. 13**

**Step 16.** Reinstall the exhaust system by re-lubricating the rubber exhaust bungs and then reinstall the bumper fascia by following these instructions in reverse starting at Step 6.

**Congratulations on the completed installation of the Honda Fit Stealth EcoHitch!** It is designed with a lifetime warranty for a lifetime of enjoyment. If you have any questions or suggestions please contact our tech support at [support@tlcentral.com](mailto:support@tlcentral.com) or by phone at (253)-854-1832.



# WARRANTY/DISCLAIMER INFORMATION

Torklift Central requires proof of purchase for warranty claim registration, with pictures of any defective product before issuing a replacement. Torklift will not accept claims on any product without proof of purchase, which can be faxed, scanned, emailed or mailed to the information provided below. Torklift Central warrants its hitches, custom hitch receivers and accessories (excluding electrical wire harnesses which carry a warranty from their specified manufacturer) from date of purchase against defects in material and workmanship under normal use and service for the ownership life of the original consumer purchaser. Torklift Central will replace free of charge any part that proves defective in material or workmanship when presented to Torklift Central, transportation charges prepaid by purchaser, at the address below. **This warranty is limited to defective parts replacement only. Labor charges and/or damage incurred in installation or replacement, as well as incidental and consequential damages connected therewith are excluded.** This warranty does not include normal wear and tear or the finish and paint. Rusting, cracking or peeling of the finish is also excluded. Some states do not allow the exclusion or limitation of incidental or consequential damages, so the above limitation or exclusion may not apply to you. Any damage to Torklift Central products as a result of misuse, abuse, neglect, accident, improper installation or any use violative of instructions furnished by Torklift Central will void the warranty. This warranty gives you specific legal rights and you may also have rights, which vary from state to state. With warranty service, you may be able to go to a small claims court, a state court or a federal district court.

Although Torklift Central trailer hitches are both tested and rated for towing within the specific capacity label found on each trailer hitch. Torklift Central assumes no liability for vehicle manufacturers warranty due to the use of a Torklift Central trailer hitch being used for towing behind any vehicle or using the trailer hitch in a manner that it was not designed for. Although this specific trailer hitch has a load rating, which includes trailer tongue weight, and a trailer weight carrying capacity, Torklift Central is not responsible for the voiding of any warranty on any vehicle due to factory towing limitations. All vehicle warranties are the sole property and responsibility of the owner of the vehicle that the Torklift Central trailer hitch is installed upon. Torklift Central does not endorse towing behind any vehicle if the vehicles manufacturer states that towing is not recommended. Check your vehicle's owner's manual for the proper tow rating of your vehicle.

**ADDRESS:** 315 Central Ave N. Kent, WA 98032

**\*WARNING\*** Your vehicle may have a lower tow rating than this trailer hitch. If your vehicle's tow rating is less than the rated towing capacity on your Torklift Central trailer hitch, your trailer hitch capacity is limited to your vehicle's factory rated towing capacity.

**FOR EXAMPLE:** the label on your Torklift Central trailer hitch states it's capacity is rated for 500 pounds tongue weight and 5,000 pounds towing weight. However your vehicle's factory rated towing capacity is limited to only 350 pounds tongue weight and 3,500 pounds towing weight. In this example your maximum towing capacity of your Torklift Central trailer hitch is limited to 350 pounds tongue weight and 3,500 pounds towing weight as stated by your vehicle's maximum factory tow rating.

**\*DANGER\*** Never exceed your vehicle's manufacturer's recommended towing capacity which may be a lower rating than this trailer hitch

Unsure of your tow rating? Download our towing app from the app store to find your vehicles tow rating.  
[www.torkliftcentral.com/app.php](http://www.torkliftcentral.com/app.php)